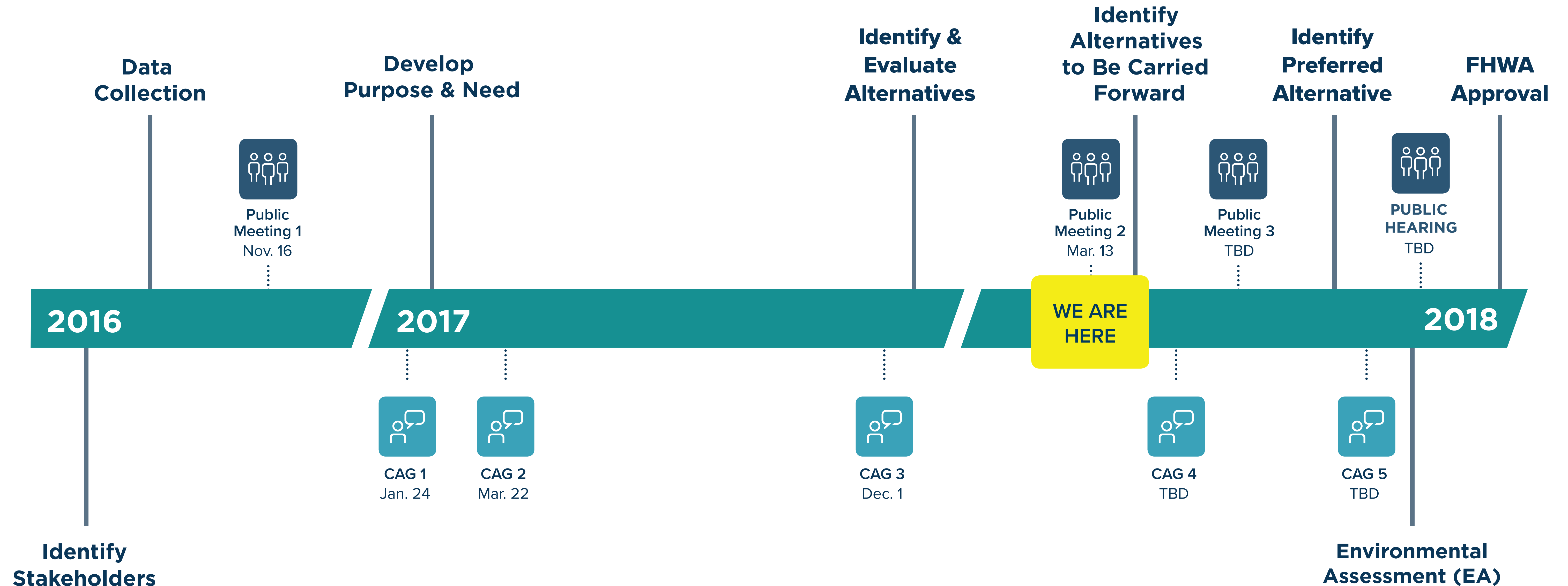


Phase I Process

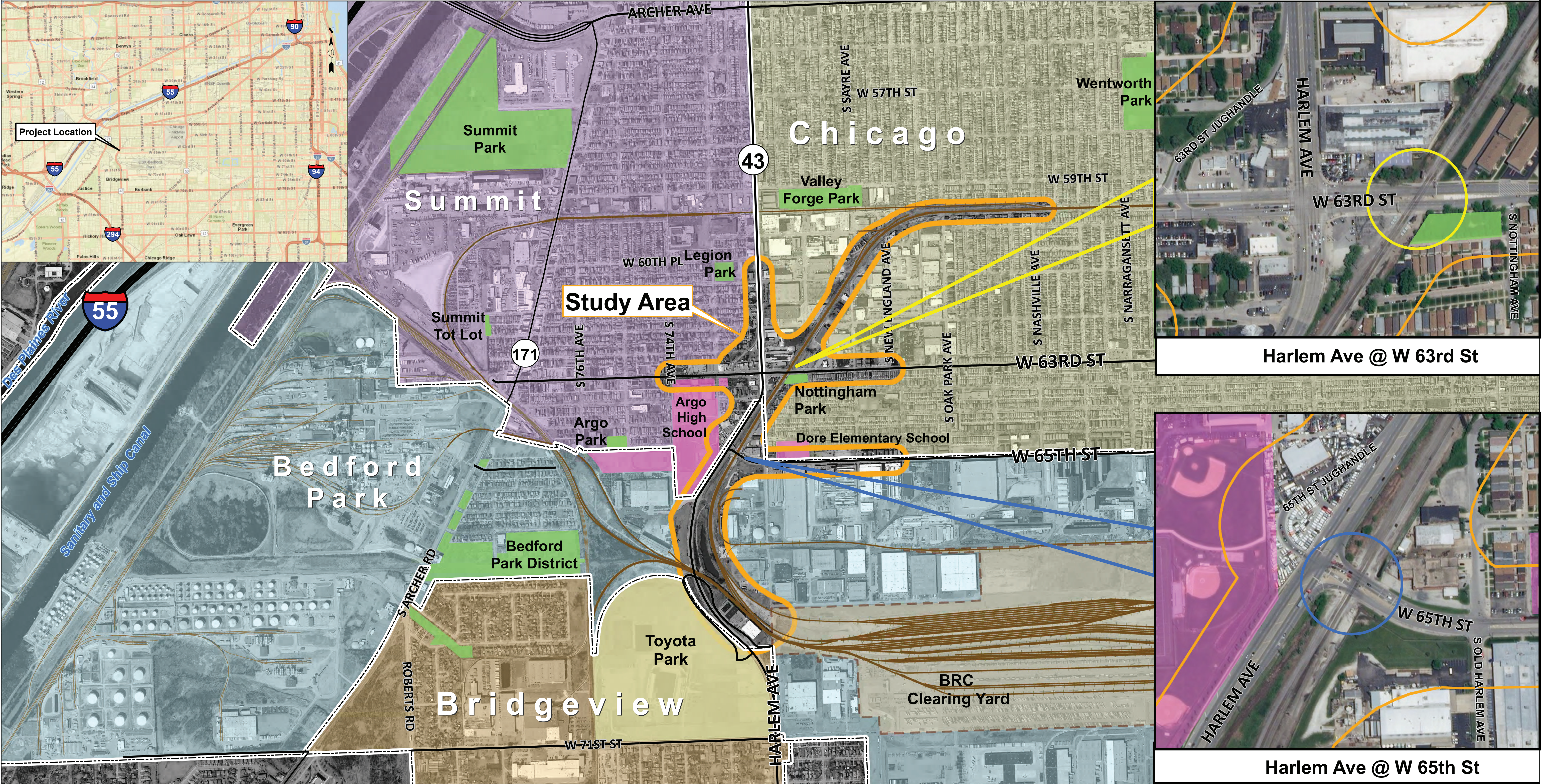


**PUBLIC
MEETINGS**



**CAG
MEETINGS**

Project Location Map

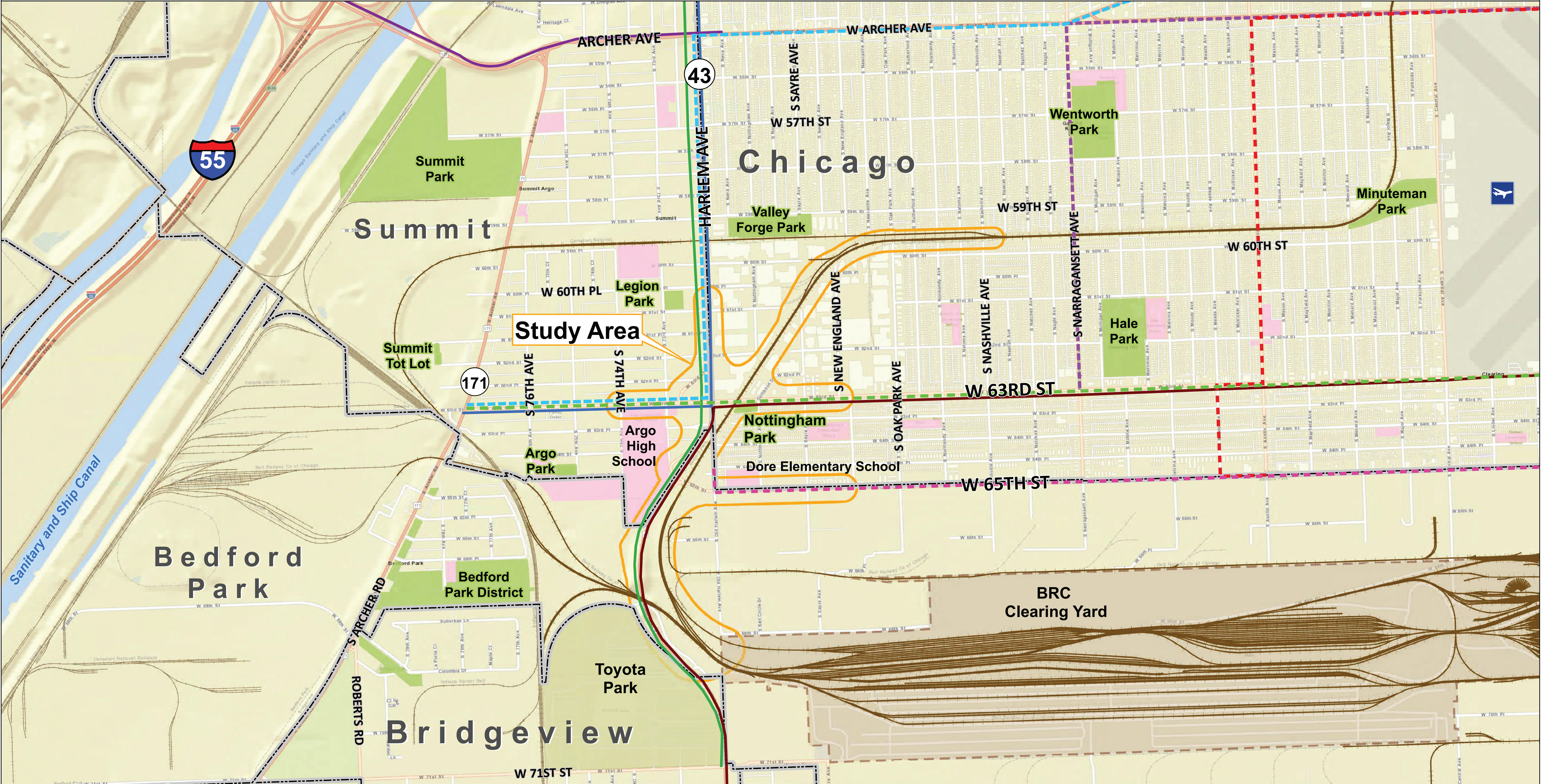


LEGEND

Study Area	At-Grade Crossings	City of Chicago	Village of Bridgeview	Park	BRC Clearing Yard
W 63rd St	Village of Bedford Park	Village of Summit	Toyota Park	School	
W 65th St					



Existing Transit Network



LEGEND

- Study Area
- Municipal Boundary

CTA Bus Routes

- Route 55A
- Route 55N

Route 62/62H

- Route 63W
- Route 165

PACE Bus Routes

- Route 307
- Route 330

Route 386

- Route 856

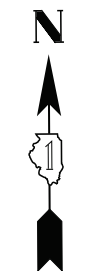
Park

- Toyota Park

BRC Clearing Yard

- School

0 350 700 1,400
Feet



Problem Statement

The at-grade crossings of the Belt Railway Company of Chicago (BRC) tracks at 63rd and 65th Streets near IL 43 (Harlem Avenue) have limited the mobility and access to the surrounding communities.

The existing condition creates travel delays and diversions that affect all transportation users, especially emergency vehicles, transit, and the community.

The delays also hinder economic development, make bicycle and pedestrian movement difficult, and negatively affect quality of life.

Drainage issues within the study limits will also need to be addressed.

Purpose and Need Statement

The purpose of the project is to enhance safety, increase mobility, and improve multimodal connectivity.

The study team evaluated the following existing conditions and other data to determine the need for improvement:

- Vehicular & Pedestrian Crashes
- Rail and Highway Conflict
- Intermodal Transportation
- Emergency Services
- Traffic Analysis
- Public Transportation
- Non-Motorized Modes

Vehicular & Pedestrian Crashes

CRASH STUDY RESULTS

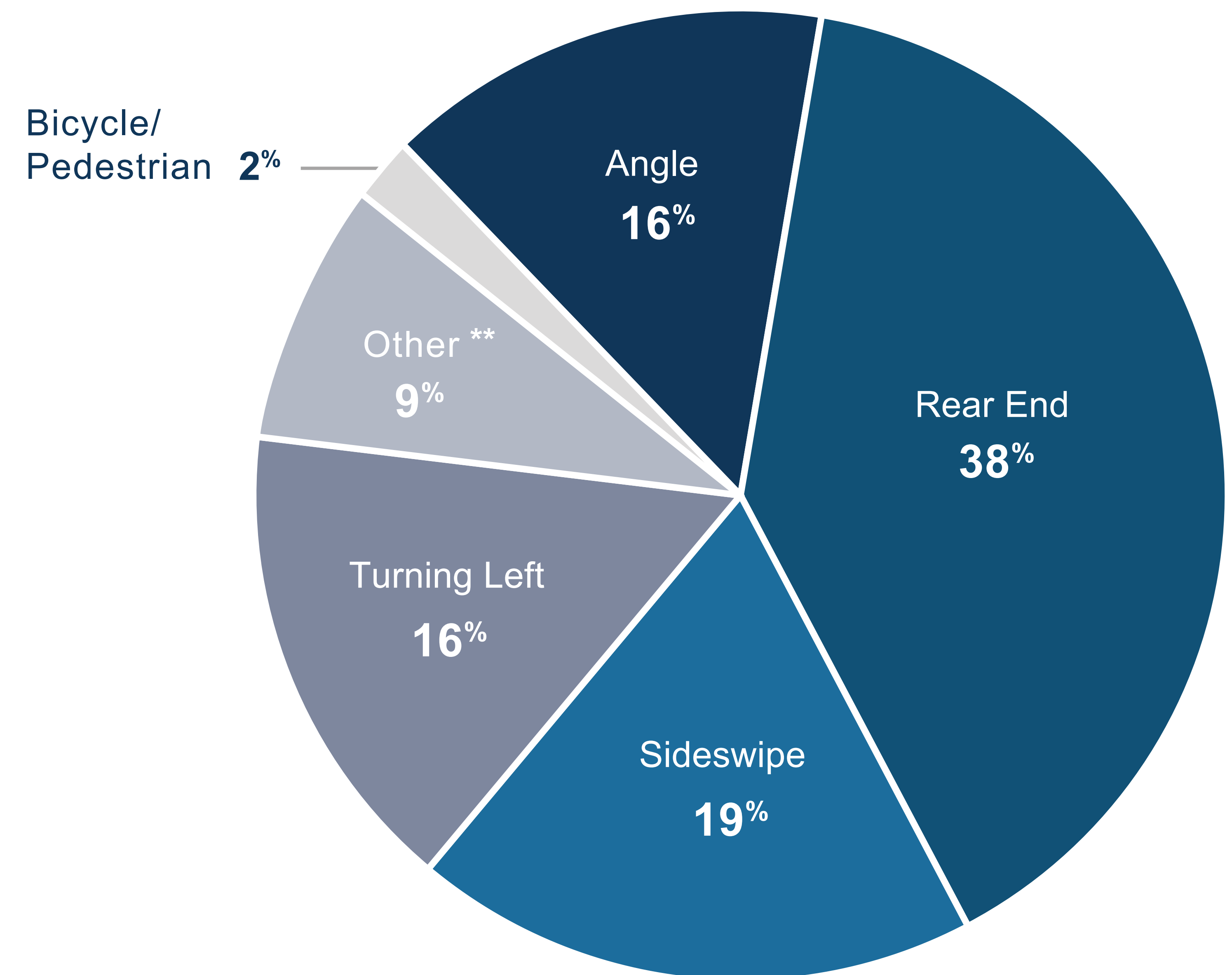
2010-2015

465
total crashes

87
injury

9
bicycle/
pedestrian

5
fatalities*



*An additional 2 fatalities occurred in crashes in the study area since 2015. **Includes fixed object, parked vehicles, and other noncollision crashes.

Vehicle Queuing

existing PM condition



63rd St. at BRC is a 911 critical crossing. If trains block the crossing for more than 5 minutes, emergency services must be notified.